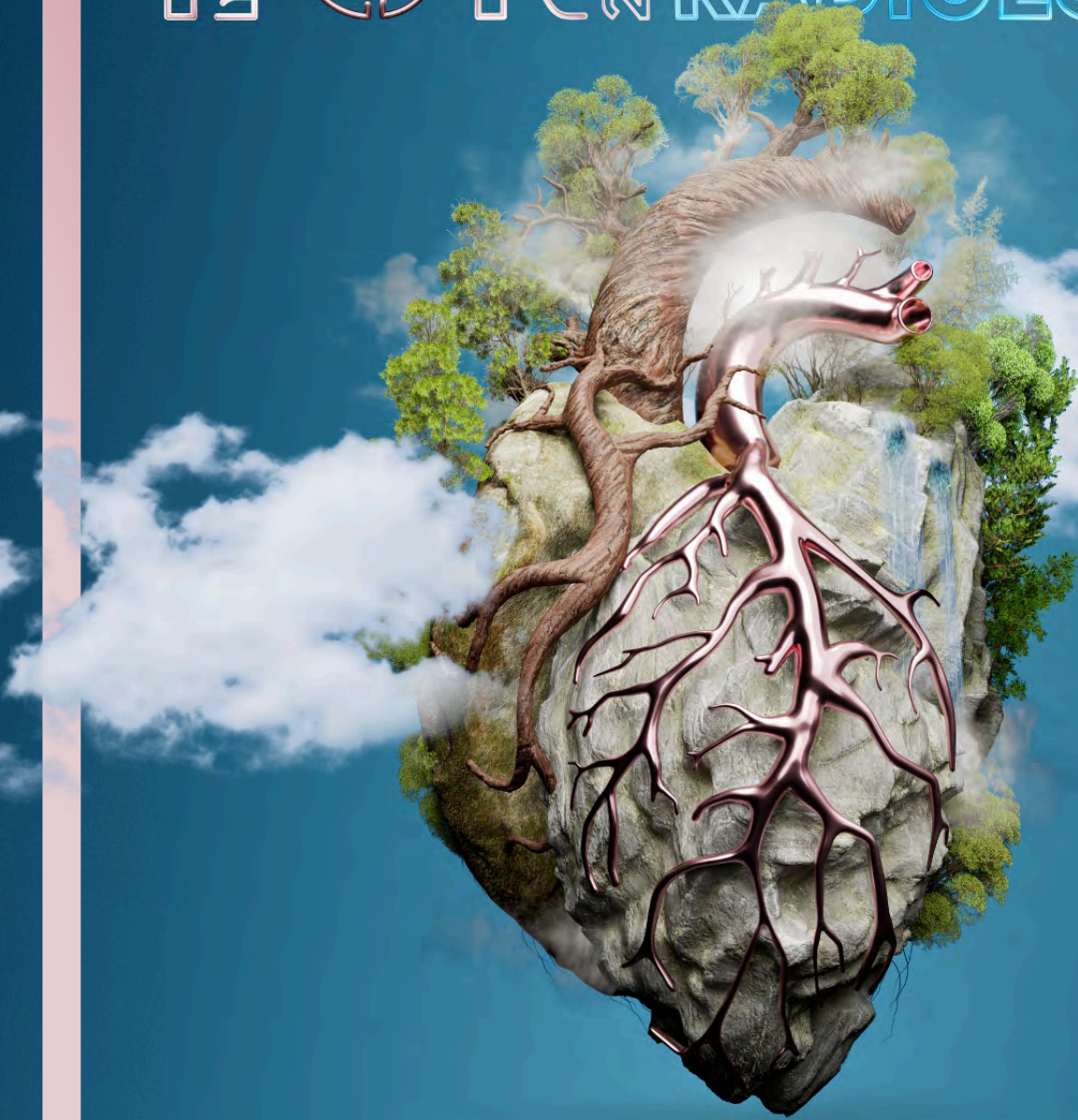


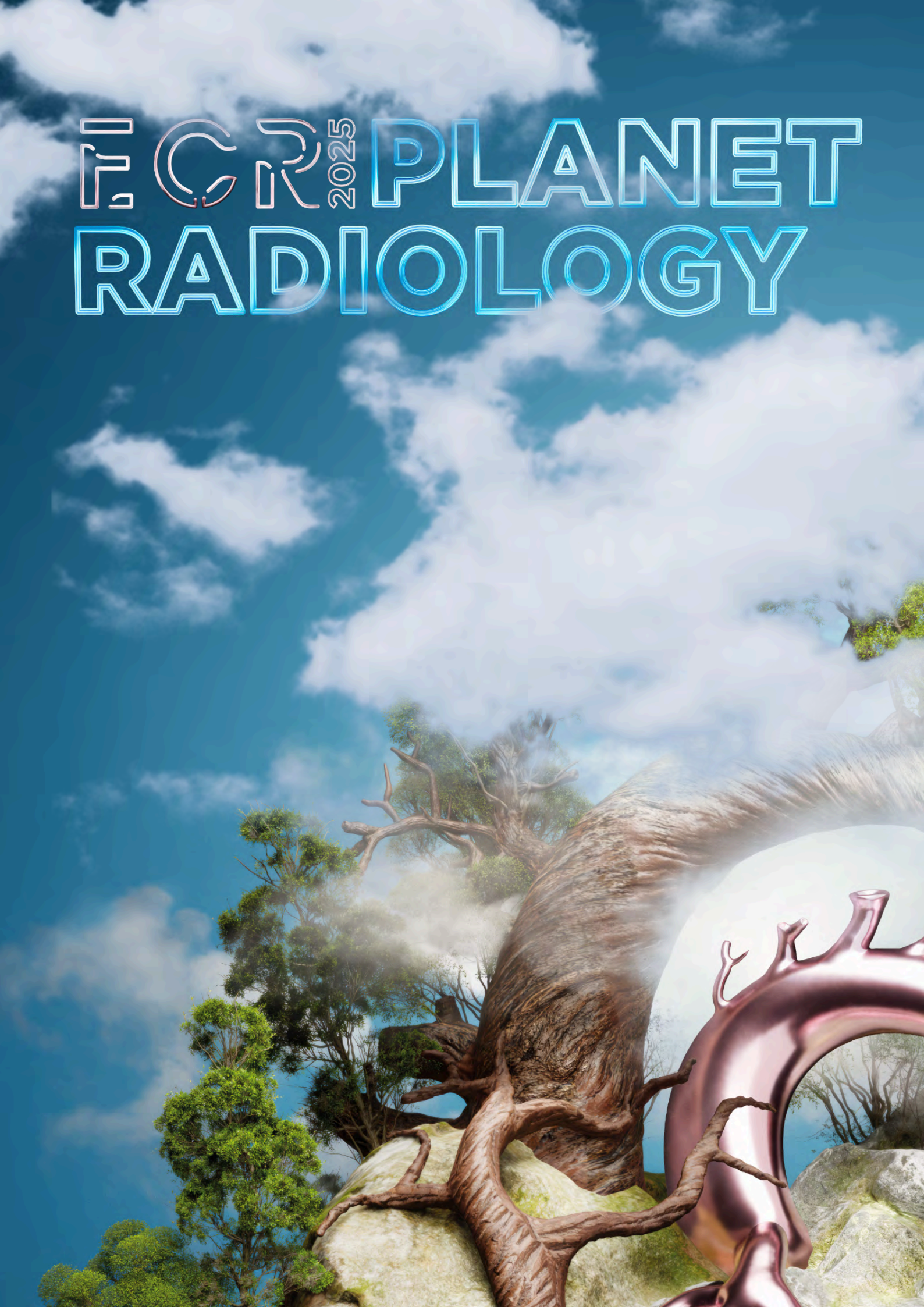
ECR 2025 PLANET  
RADIOLOGY



# INVITATION TO THE EXHIBITION

EXHIBITION DAYS  
FEBRUARY 26 – MARCH 01 / VIENNA

# ECR 2025 PLANET RADIOLOGY



DEAR EXHIBITORS,  
DEAR FRIENDS,

We would like to thank all of those who helped to bring 'Next Generation Radiology' to life at ECR 2024. Guided by the visionary leadership of ECR 2024 President Prof. Carlo Catalano, the congress stood as a beacon of cutting-edge science, invaluable education, and unforgettable moments.

We are pleased to announce that with 18,861 participants, the congress offered exhibitors unparalleled opportunities to interact with attendees, increase brand awareness and further their goals.

With a spotlight on the future of radiology and how medical imaging will change in the coming years and decades, the themes of ECR 2024 permeated not only our educational sessions but also the vibrant congress spaces, dynamic technical exhibits, and warm social gatherings.

Your unwavering support and constructive feedback have been instrumental in our journey towards excellence. It is your encouragement that fuels our commitment to push the boundaries of innovation further with each passing year.

With that being said, we now set our sights towards ECR 2025 and its revolutionary theme 'Planet Radiology.' Here, we will invite participants to take a step back and consider radiology's impact on the world as a whole, not only from a medical perspective, but also in terms of sustainability and social responsibility.

In recognition of the fervent demand for prime exhibition space, we anticipate a heightened competition for coveted positions and venues in 2025. For those keen on securing their preferred locations, we encourage you to explore the benefits of becoming a Supporting Member, ensuring priority consideration for your preferences.

Seize the opportunity to lock in your spot at next year's event and benefit from early-rate fees. By joining our esteemed group of Supporting Members, you not only enhance your visibility but also unlock exclusive perks and savings.

We extend our heartfelt gratitude to all who have shared their insights and perspectives, shaping the trajectory of ECR's evolution. As we eagerly await the genesis of 'Planet Radiology', we invite you to mark your calendars for February 26 – March 02, 2025, where we will embark on another transformative journey together.

Sincerely,



Executive Director of ESR,  
Peter Baierl

# EUROPEAN CONGRESS OF RADIOLOGY

THE MOST SIGNIFICANT RADIOLOGICAL MEETING WORLDWIDE



26,000+ m<sup>2</sup> exhibition space

220+ exhibiting companies & imaging organisations

2,000 m<sup>2</sup> artificial intelligence exhibition space including the AI Theatre featuring keynote speeches, interactive panel discussions and pitches from more than 20 innovative companies

## TOP 20 COUNTRIES ECR 2024 ONSITE

1	Italy	1,101	11	Belgium	274
2	Germany	988	12	United States of America	268
3	Austria	665	13	Türkiye	260
4	United Kingdom	592	14	China, People's Republic of	256
5	The Netherlands	539	15	France	248
6	Spain	492	16	Denmark	242
7	Romania	485	17	Greece	177
8	Switzerland	442	18	Norway	174
9	Poland	340	19	Korea, Republic of	171
10	Portugal	324	20	Sweden	160

**PLATINUM SUPPORTING MEMBERS**

Bayer		Guerbet	
Bracco		Mindray	
Canon Medical		Philips	
Esaote		Siemens Healthineers	
Fujifilm Europe		United Imaging	
GE HealthCare			

**SILVER SUPPORTING MEMBERS**

ClariPi		Lilly	
GMM Group		Vieworks	

AB-CT – Advanced Breast-CT	DRTECH
AGFA HealthCare	Echolight
AGITO Medical	Ecoview
Aidoc	EDL
AIRamed	Elsevier
AIRS Medical	EMD Technologies
Albatross Projects GmbH	EOS Imaging
ANNALISE LTD	Esaoite
ASG Superconductors SpA	Evidia
AZmed	FARMAK
B-RAYZ	febromed
Barco	Foreseeson (WIDE)
Bayer	FUJIFILM
Becton Dickinson UK Limited	GE Healthcare
Beijing Wandong	General Medical Merate (GMM)
BIOTRONIK Vertriebs GmbH & Co. KG	Genoray
BIP Medical	Gleamer
BMI	GMS
Bracco	Gore & Associates
BrainScan	Guerbet
Canon	HAMAMATSU PHOTONICS
Canon Medical Components Europe B.V.	IAE
Careray	IB LAB
Carestream	IBA Dosimetry
CAS Computer Anwendungssysteme Gesellschaft m.b.H.	iCAD
CASIS - Cardiac Simulation & Imaging Software	ICOMETRIX
CEFLA (NewTom)	iCRco
CEIA	Image Information Systems
Cercare Medical	Inari Medical
CEREBRIU	Incepto Medical
Chison	Infervision
Chronos Imaging LLC	INFINITT Europe
Circle Cardiovascular Imaging BV	Ingedata
ClariPi	IRadimed
Codonics	iRay
Collective Minds Radiology	JPI Healthcare
CompAI Healthcare	Juisci
contextflow	Jusha Display Technology Co., Ltd
ContextVision	KA Imaging
Control-X Medical Zrt.	Konason Medical Imaging Technology Co., Ltd.
Cook Medical	Konica Minolta
Coreline Soft	Korea Nuclear International Cooperation Foundation (KONICOF)
CPI Communications & Power Industries Canada	KRYPTONITE
CurveBeam AI	Kyoto Kagaku
D.A.T.A. Corporation Softwareentwicklung	Leeds Test Objects
deepc GmbH	LG Electronics
DeepHealth	LMT Medical Systems
DeepSight	Lucida Medical
DeepTek Inc	Lukas Software
Del Medical	Lunit
Delta Electronics	Maiwei
Detection Technology	MAVIG
Devicor Medical Europe GmbH / Mammotome	Median Technologies
Dicom Systems	medical ECONET GmbH
Digitec Srl	Medicor Europe AG
DMS Imaging	Mediengruppe Oberfranken fachverlage GmbH & Co. KG
DRGEM	Medimaps Group

Medis Medical Imaging	Sectra
MedspaceVR	SEDECAL
MEDTRON AG	Segmed
Medtronic	Shanghai PZMedical Technology Co., LTD.
Mentice	Shenzhen Anke
Merit Medical	Shenzhen Antmed Co., Ltd
METALTRONICA Spa - Booth	Shenzhen Beacon Display Technology Co., Ltd
Micro-X Ltd.	Shenzhen Browiner
Milvue	Shimadzu Europa GmbH
Mindray	Shukun Technology Co.,Ltd
Mindways Software	SIDAM
MinFound Medical Systems	Siemens Healthineers
Mint Medical	Sino Medical-Device Technology Co., Ltd
MirEye Imaging Inc.	SinoVision Technologies (Beijing)
Mirion Medical	SIUI SHANTOU Institute of Ultrasonic Instruments Co., Ltd
MX Imaging	Skanray
Nanjing Perlove Medical Equipment Co., Ltd	SMART REPORTING
Neurophet	Smart Soft Healthcare
Neusoft	Smit Mobile Equipment
Njord International AB	SOFTNETA
NORAS MRI Products	Solutions for Tomorrow
NordicNeuroLab AS	Sonoscape
Northdocks	Spellman
Northh Medical	Spimed-AI
Oley Medical	Springer
OpenRad	STEPHANIX
OR-CZ	Steute
Oxford University Press	SuperSonic Imagine
Oxipit	Suzhou Norayso Technology
PACSHHealth	Suzhou Powersite Electric
Penumbra Europe GmbH	SYFM
Philips	SYNTHETICMR AB
Philips (DUNLEE)	Technix
Planmed	Teleconsult
Primax International	Teledyne Healthcare X-Ray Solutions
PRO PROJECT	Teleded
Promedius	TeraRecon
PTW Freiburg GmbH	Thales
Qaelum	Tianjin Wanbo Wire & Cable Co., LTD
QApel Medical Inc.	Time Medical Limited
QUART GmbH	Toutenkamion Group
Quibim	Trade Art 2000
Qure.ai Technologies Limited	Troyka Med Tibbi Sistemler A.S.
Rad AI	Ulrich Medical
Radcal Corporation	United Imaging Healthcare
Radiobotics	VacuTec Messtechnik
Raya Diagnostics GmbH	Varex Imaging
Rayence	Vieworks
Remedy Logic Inc.	VILLA SISTEMI MEDICALI S.p.A.
Riverain Technologies	Visaris
roclub GmbH	Volpara Health
RTI Group	VUNO
Samsung	Wisepress
Sanochemia	Wuxi Yushou Medical Appliances Co., Ltd
ScanLabMR	XrayOne
Schiller	Ziehm Imaging
Screenpoint	Ziosoft

# THE ARTIFICIAL INTELLIGENCE EXHIBITION (AIX)

The eagerly awaited return of our premier AI Exhibition is set to awe attendees at ECR 2025!

From its inception in 2019, the AI Exhibition has captivated audiences with dynamic exhibits and immersive educational sessions. ECR 2025 promises an array of scientific symposia focused on AI advancements, providing attendees with profound insights into this ever-changing topic.

Position your company prominently within the AI Exhibition to connect with participants and assert your leadership in the artificial intelligence domain. Don't miss this opportunity to showcase your innovations and engage with industry pioneers firsthand.



**More details will follow soon on**

**[MYESR.ORG](https://myesr.org)**



## ECR 2025 CONGRESS AND EXHIBITION DAYS

ECR 2025 will take place from Wednesday, February 26, to Sunday, March 02.

**The exhibition will be one day shorter**, from Wednesday, February 26, to Saturday, March 01.

The exhibition opening hours, as well as the set-up and dismantling days and times, will be announced in the Exhibitors Manual. This manual will also include all necessary planning details regarding the exhibition, rules and regulations concerning booth design and set-up, order forms and the online link for additional booth services.

### Please note:

Sunday is still a full congress day until 15:00, and only the exhibition areas are closed.

## APPLICATION TERMS

The form "Application for Exhibition Space / Contract" is included in this prospectus, which is e-mailed to prospective exhibitors.

The application form must be filled in, signed with a legally competent signature, and delivered on time. The submitted application is binding for the exhibitor, independent of any booth allocation by ECR.

### **IMPORTANT: please mind the application deadline SEPTEMBER 06, 2024, as exhibition space is limited.**

Upon application, it is mandatory to pay the 1<sup>st</sup> instalment (70%), otherwise your company will not be included in the allocation ranking and corresponding booth space assignment process. After the application deadline, space assignment will start.

Should the allocation process reveal that the exhibition is fully booked, all exhibitors who cannot be assigned anymore will receive a 100% refund of their pre-payments.

Applications deemed ineligible by the Congress Organiser ECR will be returned without giving cause and any exhibition space funds on deposit will be refunded.

## OFFICIAL COMPANY LISTING

Only one company name per exhibition space booking will be listed in all publications (online, in all exhibitors' lists, plans and signage). Listing of "affiliated partners" will not be possible. The company name listed in the "Exhibitor Name for Publications" field below will be the final name used in all publications. Any subsequent name changes will be subject to a fee of € 1,000. Changes requested after January 17, 2025, will NOT be reflected in print materials, only online publications.

## PAYMENT DEADLINES

### APPLICATIONS UNTIL MAY 31, 2024 – EARLY RATE

The early floor space rate is only applicable if the application and payment are received on the ECR account no later than May 31, 2024. After this date, the late rate will be applied (without further notice), and the difference will be automatically added to the final floor space invoice.

The 2<sup>nd</sup> and final payment (30% + corner fee if applicable) will be invoiced after space assignment and must be received in the ECR account within 14 days of the invoice date.

### APPLICATIONS AFTER MAY 31, 2024 - LATE RATE

In any case payment of the 1<sup>st</sup> instalment (70%) is immediately due upon application / invoice receipt, but must reach the ECR account within 30 days of the invoice date.

The 2<sup>nd</sup> and final payment (30% + corner fee if applicable) will be invoiced after space assignment and must be received in the ECR account within 14 days of the invoice date.

### APPLICATIONS AFTER SEPTEMBER 06, 2024

Bookings made after September 06, 2024, will be put on hold and will only be considered once the booth assignment process for all other bookings made before the booking deadline is completed (the date of completion cannot be determined yet).

In any case, the payment of the 1<sup>st</sup> installment (70%) is immediately due upon application/invoice receipt but must be received in the ECR account no later than 30 days after the invoice date.

The 2<sup>nd</sup> and final payment (30% + corner fee if applicable) will be invoiced after space assignment and must be received in the ECR account within 14 days of the invoice date.

### APPLICATIONS AFTER OCTOBER 01, 2024

Bookings made after October 01, 2024, will be put on hold and will only be considered once the booth assignment process for all other bookings made before the booking deadline is completed (the date of completion cannot be determined yet).

To be included in the allocation process, a payment of 100% is due immediately upon application/invoice receipt and must be paid by credit card. After booth allocation, any applicable corner fees will be invoiced separately. If the allocation process reveals that the exhibition is fully booked and your booked space cannot be assigned, the 100% pre-payment will be refunded.

**GENERAL CONDITIONS,  
PAYMENT AND CANCELLATION TERMS**

The overall exhibition space is limited. Should the allocation process reveal that the exhibition is fully booked, all exhibitors who cannot be assigned anymore, will receive a 100% refund of their pre-payments.

If an exhibitor fails to comply with the given payment dates and terms (also because of incomplete payment of exhibition space), ECR reserves the right to automatically cancel this booking and assign the space to another company. Such cancelled exhibitors may have to register again by submitting a new booking form (applicable conditions according to the new booking date).

All invoices will be sent via email as PDF files. If the exhibitor requests changes to an invoice that has already been issued and sent, an administration fee of € 70 will be charged automatically to the new invoice recipient.

Complaints regarding invoices must be submitted in writing immediately upon receipt. Late objections will not be accepted.

If an exhibitor forwards invoices to third parties, the exhibitor nonetheless remains the debtor.

The application for exhibition space/contract is not binding until a written confirmation by the ECR is sent to the exhibitor.

Subleasing – Access Permission: partially or wholly subleasing or otherwise relinquishing a stand to a third party as well as private arrangements for exchange of stands or floor space between exhibitors is prohibited. The ECR reserves the right to enter any stand at any time.

The exhibitors are required to comply with the Terms and Conditions of Participation as well as the ECR 2025 Exhibition Rules and Regulations, which are included in the "Invitation to the Exhibition" brochure. These rules and regulations will also be included in the ECR 2025 Exhibitors' Manual, which will be published in December 2024. Additionally, exhibitors are expected to comply with the Technical Specifications in the circulars related to the Congress, as well as the regulations in the Exhibitors' Manual.

Any change in the duration, date or venue of the exhibition/ event shall neither entitle the exhibitor to withdraw from the contract to request lowering of fees, nor to enforce indemnity claims.

In any case, any legally or officially mandated Covid-19 regulations apply. The organiser reserves the right at any time to take additional safety measures (e.g. wearing a FFP2 mask, stricter access rules, etc.), which are equally mandatory for attendance of the event and the exhibition. Exhibition bookings remain valid, and conditions of cancellation apply.

In all cases of litigation, it is agreed to by the exhibitor that the competence of the duly authorized court in Vienna, Austria is recognized. Electively the ECR may choose to appeal to the competent court in whose jurisdiction the exhibitor falls. Austrian law is applicable.

**EXHIBITION SPACE FEES (PRICES ARE NET)**

**EARLY RATE – with application & payment on the ECR account by May 31, 2024:**

- € 755.- /sqm Regular
- € 620.- /sqm Platinum Membership ESR
- € 620.- /sqm Publishers (book sellers & publishing houses)

If the payment has not reached the ECR account by May 31, 2024, the late rate will be charged automatically without further notice.

**LATE RATE – after May 31, 2024, onwards:**

- € 900.- /sqm Regular
- € 750.- /sqm Platinum Membership ESR
- € 750.- /sqm Publishers (book sellers & publishing houses)

**Additional exhibition space fees**

- **OBLIGATORY: Corner Fee**  
The corner fee is charged based on the above fees and is applicable per corner. The required corner fee for each open booth corner is determined by the final booth shape (corner, peninsula, or island booth) following booth allocation confirmation by ECR. This fee will be automatically charged with the final invoice for floor space and not with the first instalment.
- **Column(s) on booth area**  
Please note that the space of any column(s) located on an assigned booth area will not be deducted from the total invoiced exhibition space.



## PAYMENT INSTRUCTIONS

Payments must be made to:

**Account name:** Education Congress Research GmbH  
**IBAN:** AT47 2011 1281 5166 9700  
**BIC:** GIBAATWWXXX  
**Bank:** ERSTE BANK  
**Bank address:** Donau-City-Strasse 7, Ebene 27 Top D,  
 1220 Vienna  
**Bank code:** 20111

All payments must be made free of charge for the beneficiary (national and international). If bank charges occur, they might automatically be added by ECR on the following invoice to the exhibitor.

Prices are net – the tax liability lies with the benefit recipient; for companies with Austrian VAT no.: +20% VAT.

Mandatory contract fee of 1% on all sales of exhibition space, referring to Paragraph 15 Section 1 according to the Austrian Stamp Duty Act.

Please note that payment by credit card for floor space invoices will only be accepted for 100% payments related to bookings after December 1, 2024.

## CANCELLATION TERMS FOR EXHIBITORS

If exhibition space is cancelled up to October 01, 2024: 50% of the total space costs will be charged.

If exhibition space is cancelled on or after October 02, 2024, a cancellation fee of 100% of the total space cost will be charged.

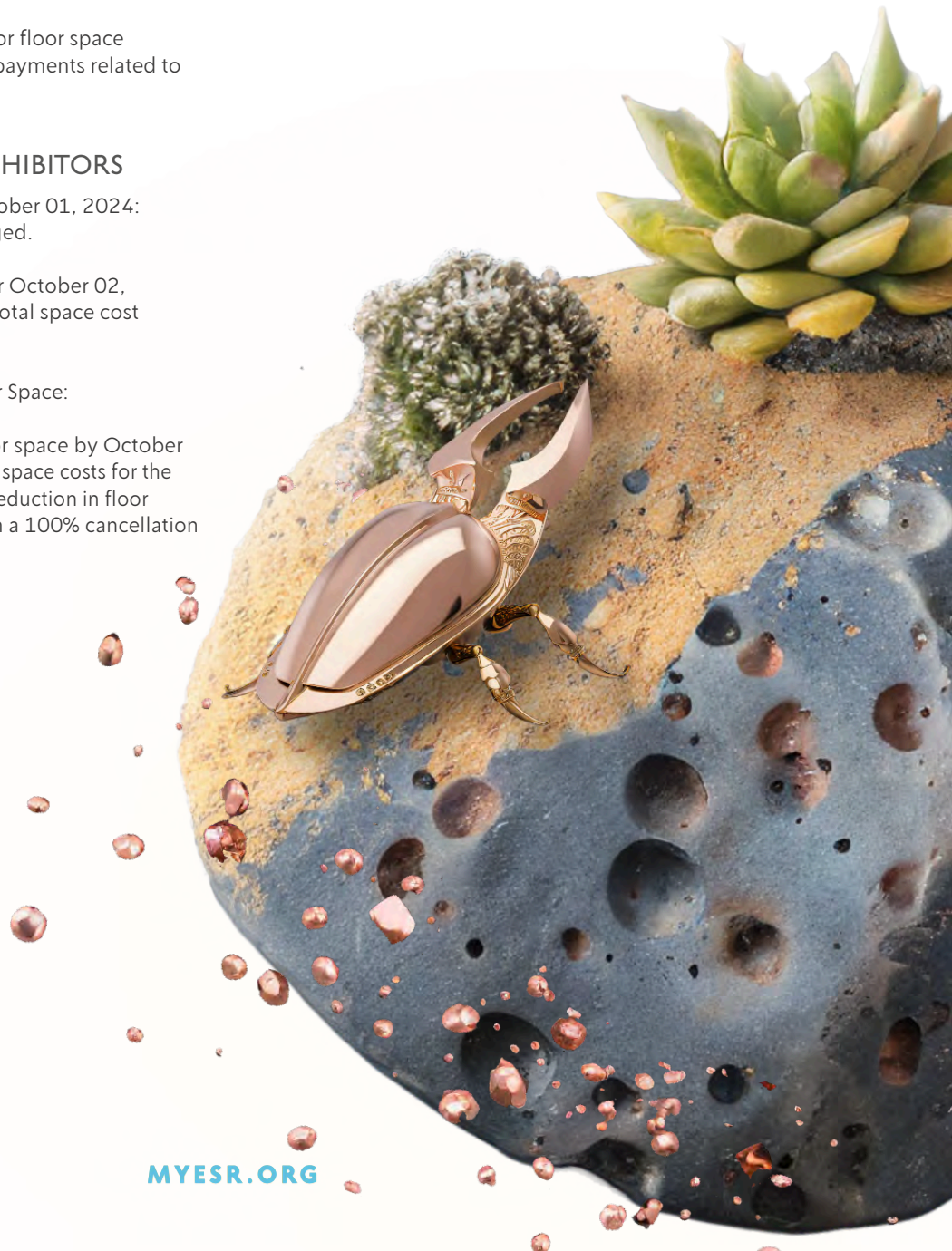
Cancellation Terms for Reduction of Floor Space:

If the exhibitor reduces their booked floor space by October 01, 2024, a cancellation fee of 50% of the space costs for the reduced floor space will be charged. Any reduction in floor space after October 01, 2024 will result in a 100% cancellation fee.

## CANCELLATION OF THE EXHIBITION

If, for any reason, including but not limited to reasons of force majeure such as blackout, strikes, natural disasters, epidemics, pandemics, government regulations, internet failure or hacker attack it becomes impossible or economically not justifiable to hold the Technical Exhibition, the Exhibition management will not be liable for any damage or loss incurred by exhibitors.

The Exhibition management will deduct 30% from the exhibition fee paid by the exhibitor to cover costs already accrued with the organization of the Technical Exhibition. For the remaining 70% of the exhibition fee, the Exhibition management will provide the performance of adequate on-line services by the ESR for 2025 such as animated overlay, top advert banner, flying carpet, industry commercial on connect.myESR.org, ESR connect Episode, ESR Social Media (LinkedIn, Facebook, Instagram), Industry mailing (eblasts), advertisements options in ESR mailings and during ESR online events such as virtual exhibition, virtual booth space, online satellite symposia and workshops. If those online services will not be used by the exhibitor, the amount of 70% shall be forfeited and the exhibitor is not entitled to any refund.





## BOOTH ASSIGNMENT PROCESS

**IMPORTANT:** please mind the application deadline **SEPTEMBER 06, 2024**

Overall exhibition space is limited. Upon application it is mandatory to pay the 1<sup>st</sup> instalment invoice (70%). Otherwise, your company will not be included in the allocation ranking and corresponding booth space assignment process. After the application deadline on September 06, 2024, space assignment will start.

All bookings submitted after September 06 are on hold and will be assigned after all prior exhibition space bookings have been allocated. Should the allocation process reveal that the exhibition is already fully booked, your pre-payments will be refunded 100%.

## BOOTH ASSIGNMENT CONDITIONS

After the **application deadline September 06, 2024**, the ECR will take charge of arranging the available floor area to meet the space requests of exhibitors as closely as possible.

The relevant factors for the ranking of an exhibitor in the booth allocation process are:

- ESR Supporting Membership
- collaboration and support of ESR/ECR projects
- booth size
- application date
- payment date of 1<sup>st</sup> instalment (70% part-payment invoice sent by ECR)

A preferred booth type or a column/columns on an assigned booth space do not entitle an exhibitor to request an allocation change.

During the allocation process, it must be ensured that the remaining space (e.g. in a block) can be utilized effectively and efficiently, without any space being wasted.

Booth types (row/corner/peninsula/island) will be determined by ECR.

Multilevel booths are not allowed.

Please note that suspension points and water connections are not possible in all exhibition halls/areas, but these needs cannot be considered in the booth allocation process.

Any specific location requests, such as the position from previous year(s) or preferred booth type, as well as preferences indicated on the booking form/contract, are not guaranteed and shall not be a condition for participation in the exhibition.

Non-satisfaction with an assigned booth space does not represent a condition for free cancellation. Should an exhibitor wish to cancel after the booth assignment by ECR, the regular cancellation terms remain applicable.

Final booth numbers will be assigned once the assignment process has been finalised.

ECR reserves the right to deviate from the stand confirmation and

- to allocate a stand in a different location
- to alter the size of a stand
- to relocate a stand
- to change location of congress facilities (product theatres, scientific rooms, catering spots,...)
- to close entrances and exits on the exhibition grounds and/or in the congress venue
- to carry out any other structural alterations providing it has a substantial interest in such measures.

ECR shall notify the exhibitor immediately of the need to make an alteration and to allocate wherever possible an equivalent stand space. In the event of an alteration to the stand rental, the exhibitor shall be reimbursed or invoiced for the amount, according to the case.



## ALLOCATION RANKING AND PROCEDURE

According to your ranking position and the allocation process as outlined below, please note that a reply within the given time frame is required to meet the allocation timeline. Attention: therefore, please select an authorised representative, in case of your absence, who can decide your booth location.

To avoid delays we cannot grant extensions. Thank you for your cooperation and understanding.

## ESR SUPPORTING MEMBERS

Supporting Members will be contacted one after the other with the exhibition layout for selection of their booth location in the exhibition halls.

## EXHIBITION SPACES $\geq$ 100 SQM

According to their position on the ranking list one company after the other will be contacted with a proposed exhibition space location but can request an alternative location from the remaining spaces (if feasible) within three working days after receipt of the proposal. Alternative locations can be requested but cannot be guaranteed and shall not represent a condition for the participation in the exhibition. The process must be finalised within three working days, regardless of whether the proposal will be accepted, or alternatives are requested. Therefore, please review and reply as quickly as possible to the provided allocation email. If there is no reply received within three working days, the proposed location will be considered as accepted.

## EXHIBITION SPACES $\geq$ 50 - 99 SQM

According to their position on the ranking list five companies will be contacted at the same time with a proposed exhibition space location but can request an alternative location from the remaining spaces (if feasible) within two working days after receipt of the proposal. Alternative locations can be requested but cannot be guaranteed and shall not represent a condition for the participation in the exhibition. Should companies request the same alternative location, the company with the highest ranking will be assigned. The process must be finalised within two working days, regardless of whether the proposal will be accepted, or alternatives are requested, therefore please review, and reply as quickly as possible to the provided allocation email. If there is no reply received within two working days, the proposed locations will be considered as accepted.

## EXHIBITION SPACES $\geq$ 30 - 49 SQM

According to their position on the ranking list ten companies will be contacted at the same time with a proposed exhibition space location, but can request an alternative location from the remaining spaces (if feasible) within two working days after receipt of the proposal. Alternative locations can be requested but cannot be guaranteed and shall not represent a condition for the participation in the exhibition. Should two or more companies request the same alternative location, the company with the highest ranking will be assigned. The process must be finalised within two working days, regardless of whether the proposal will be accepted, or alternatives are requested, therefore please review, and reply as quickly as possible to the provided allocation email. If there is no reply received within two working days, the proposed location will be considered as accepted.

## EXHIBITION SPACES $\geq$ 19 - 29 SQM

Companies will be assigned according to their booth size and will be informed about their location. If available, alternative locations can be requested within the same day of receipt of the provided allocation email but cannot be guaranteed and shall not represent a condition for the participation in the exhibition.

## EXHIBITION SPACES UP TO 18 SQM

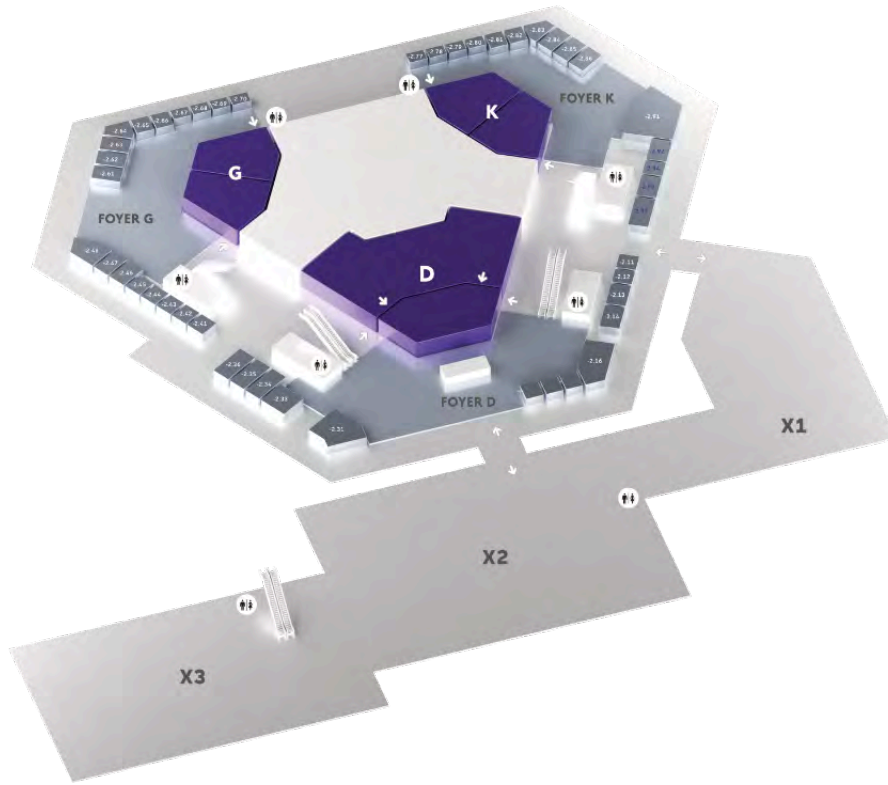
Companies will be assigned according to their booth size and will be informed about their location.



## LOWER LEVEL

EXPO X1  
EXPO X2  
EXPO X3

FOYER G  
FOYER K  
FOYER D



## ENTRANCE LEVEL

EXPO X4  
EXPO X5

FOYER E  
FOYER F



## FIRST LEVEL

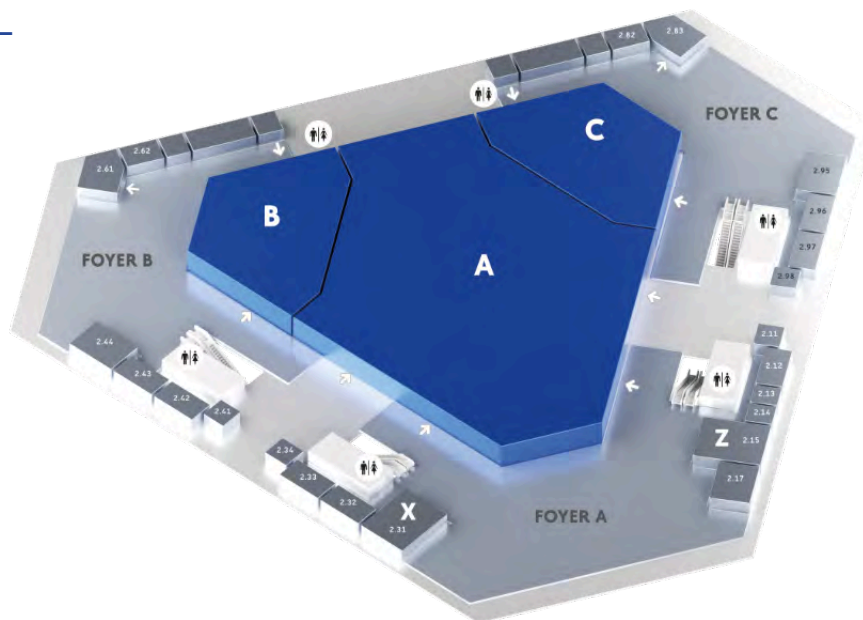
EXPO GALLERY

FOYER M  
FOYER N



## SECOND LEVEL

FOYER A  
FOYER B  
FOYER C





## GREEN MEETING – RULES & REGULATIONS

Every year we strive to expand our efforts by applying our green approach to all major activities related to the congress. Please support us in our endeavour by taking note of the following **obligatory guidelines** for Green Meetings, set forth by the Austrian Federal Ministry of Climate Action, Environment, Energy, Mobility, Innovation and Technology:

- Waste produced at the booth must be separated and disposed of according to the ECR's waste management system (see further information on waste separation below).
- If booth visitors are catered for, only bulk or reusable packaging should be used (no cans, PET bottles, Tetra Packs etc.). Only reusable dishes (drinking vessels, cutlery etc.) are permitted.
- Do not offer giveaways. If this is not possible, use durable and/or reusable fair trade or quality assured products made from environmentally friendly materials (e.g. domestic sourced wood or natural fibres). Products that produce large quantities of waste (e.g. disposable packaging material for beverages) or hazardous wastes (e.g. products with batteries or accumulators) should not be distributed.
- All materials used under the responsibility of the exhibitor (stand, roll-ups, decorations, possibly flooring, etc.) should be reusable and will be reused.

## GREEN MEETING – RULES & REGULATIONS

### on travel:

- If possible, use the well-developed train network within Europe and travel to Vienna by train. You can plan your train journey at [www.oebb.at](http://www.oebb.at).
- Use public means of transport. Vienna has a fully integrated public transport network operating from 05:00-00:30 daily, with additional services from 00:30-05:00 on Friday and Saturday nights and on nights before public holidays. Frequent services with waits of just 3-5 minutes are offered during peak times, rising to between 5 and a maximum of 15 minutes in the evenings.
- Plan your trip with the [route finder of the Wiener Linien](#) or the [WienMobil app](#).
- The Austria Center Vienna can be reached using the underground U1 (red) line. Alight at U1 station Kaisermühlen, VIC and take the Schüttaustrasse exit.
- Our location allows for barrier-free access to each floor via elevator. Find an interactive map showing all elevators and barrier-free toilets [here](#). For more information on location and accessibility, please click the following link: [www.acv.at/en/visit/arriving](http://www.acv.at/en/visit/arriving).
- Calculate and offset the CO2 emissions of your flight or car journey: [myclimate.org](http://myclimate.org)
- If bicycles are used as means of transportation, the bicycle can be parked at the forecourt of the venue.

### on accommodation:

- We recommend choosing one of Vienna's environmentally certified hotels, please find them listed here: [www.umweltzeichen-hotels.at/en/all-hotels](http://www.umweltzeichen-hotels.at/en/all-hotels). Alternatively, please select accommodation which is as close as possible to the venue.

### on waste reduction:

- Reduce the volume of material transported to and stored at the congress as much as possible.
- Avoid the mass distribution of flyers or other printed matter; hand out printed matter only upon request or give preference to electronic means of distributing information (e.g. indication of links for download, etc.).
- Use 100% recycled paper or, at the very least, paper bleached without the use of chlorine (TFC) for printed materials that are required. Alternatively, commission a printing company certified with the Austrian Eco-label to print your materials.
- Reuse any remaining brochures at other events.
- Use cloth and paper bags instead of plastic bags.

### on waste separation:

- Islands for waste separation and collection (for plastic, paper, residual waste) will be omnipresent across the event's premises.
- Additionally, collection containers for cans and metal will be available at convenient locations.
- During set-up and dismantling times, we will provide big containers for paper, plastic, wood, glass and residual in all the exhibition halls.

### on energy:

- Turn off electricity during the assembly of the booth and during night; do not leave the standby function of appliances on overnight.
- Do not use open front refrigerators.

Thank you for your support!

**If you have any questions, please contact our Green Event Coordinators:**

**Hannah Lienhardt**

+43 1 533 40 64 - 23, [hannah.lienhardt@myESR.org](mailto:hannah.lienhardt@myESR.org)

**Robert Punz**

+43 1 533 40 64 - 49, [robert.punz@myESR.org](mailto:robert.punz@myESR.org)



**ESR OFFICE**

Am Gestade 1  
1010 Vienna, Austria  
[www.myESR.org](http://www.myESR.org)

**ESR Annual Meetings & Industry Relations**

Email: [promotion@myESR.org](mailto:promotion@myESR.org)

**Mr. Robert Grünkranz**

Tel.: +43 1 533 40 64 ext. – 527  
Email: [robert.gruenkranz@myESR.org](mailto:robert.gruenkranz@myESR.org)

**VENUE OF CONGRESS AND EXHIBITION**

Austria Center Vienna (ACV)  
Bruno Kreisky-Platz 1  
1220 Vienna, Austria  
[www.acv.at](http://www.acv.at)



THE ANNUAL MEETING OF:

